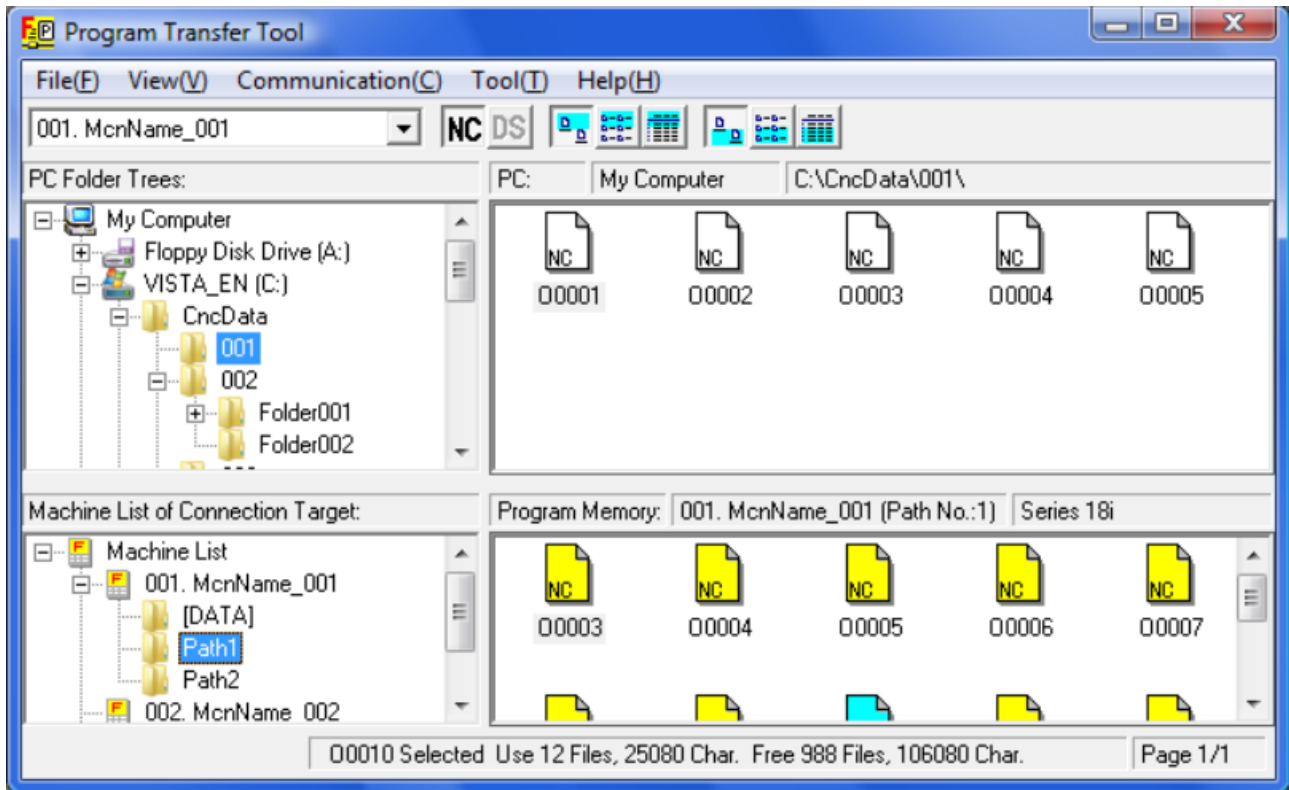


Program Transfer Tool (Serial Number License)



Disclaimer

This brochure has been provided to you by FANUC Europe Corporation S.A. ("FANUC") for convenience and general information purposes only, with no intention of providing comprehensive, complete, accurate or up to date information, and also contains information obtained from an independent FANUC customer not acting or representing to act in the name of FANUC. Therefore, FANUC does not warrant or assume any legal liability or responsibility whatsoever for the accuracy, completeness, or usefulness of any information, application, apparatus, product, use, processes or services disclosed herein, nor does FANUC endorse or recommend any application, apparatus, product, use, processes or services in or with this brochure.

Should you be interested in obtaining specific information or advice on FANUC applications, apparatus, products, use, processes or services, please contact FANUC at:

FANUC Europe Corporation
Société Anonyme
7, rue Benedikt Zender
L-6468 Echternach
Grand Duchy of Luxembourg

Tel.: +352-727777-1

1 Overview

The Program Transfer Tool is a Windows® application to manage part programs, tool offsets, custom Macro value, workpiece origin offset and tool management data. The data can easily be transferred by Ethernet between the CNC memory or data server and a PC. The software allows the operator to delete and rename files/folders or create folders in the CNC or the PC.

Program Transfer to and from the Program Memory

The following operations can be performed on the program memory of the CNC:

- Downloading a program from the PC to the program memory
- Uploading a program from the program memory to the PC
- Displaying a list of programs stored in the program memory on the screen
- Deleting a program in the program memory
- Displaying a list of tool offsets, custom macro common variables, and workpiece origin offset data, which can be transferred between the PC and CNC
- Transferring tool offsets, custom macro common variables, and workpiece origin offsets between the PC and CNC. When such data is uploaded, the format of the data is the same as the format used when the data is output from the CNC to an external device.

When the tool communicates with the CNC Series 30i/31i/32i, the following processing can also be performed:

- Downloading a folder and its subfolders and files from the PC to the program memory
- Uploading a folder and its subfolders and files from the program memory to the PC
- Deleting a folder in the program memory
- Renaming a file or folder in the program memory
- Creating a new folder in the program memory

Program Transfer to and from a Data Server

The following operations can be performed on external storage devices (compact flash memory and hard disk drive) of a data server:

- Downloading a file from the PC to the connection destination
- Downloading a folder and its subfolders and files from the PC to the connection destination
- Uploading a file from the connection destination to the PC
- Uploading a folder and its subfolders and files from the connection destination to the PC.
- Displaying lists of folders and files stored in the connection destination
- Deleting a file or a folder in the connection destination
- Renaming a file or folder in the connection destination
- Creating a new folder in the connection destination

Operation on Files on the PC

The following operations can be performed on files and folders on the PC:

- Displaying a folder tree and a file list
- Viewing and editing text files. The user can select a viewer for viewing such files and an editor for editing them.
- Copying, moving deleting and renaming a file
- Creating, deleting, and renaming a folder

2 Software

Ordering number: **A08B-9510-J515**

Licensing: Requires a license (serial number printed on CD-ROM package)
Available licenses see next page.

Purchasing: Please contact your responsible FANUC Europe Sales representative.
Find a FANUC Europe office near you: www.fanuc.eu

Software update: If the software license is activated, you can download updates free of charge at our customer portal [MyFANUC](#) ^(*)
Update specification: **9510-J515**

3 Documentation

Operator's Manual: B-64344EN ^(*) (incl. Installation and Setup instructions)

Update information: Technical Reports (A-42147-xxxxxEN) ^(*)

For search at MyFANUC click "Technical Documentation"

Then use "Category"-filter:

CNC → Software → PC Software → Program Transfer Tool



(*) Check for latest version under "Software" at customer portal [MyFANUC](#)

(*) Check for latest documentation at customer portal [MyFANUC](#)

4 Notes

The Program Transfer Tool version 9.0 or before cannot be installed only by using the upgrade software. The serial numbers of the "Program Transfer Tool" (J513) and the serial number of the "Program Transfer Tool Upgrade" (J514) are necessary.